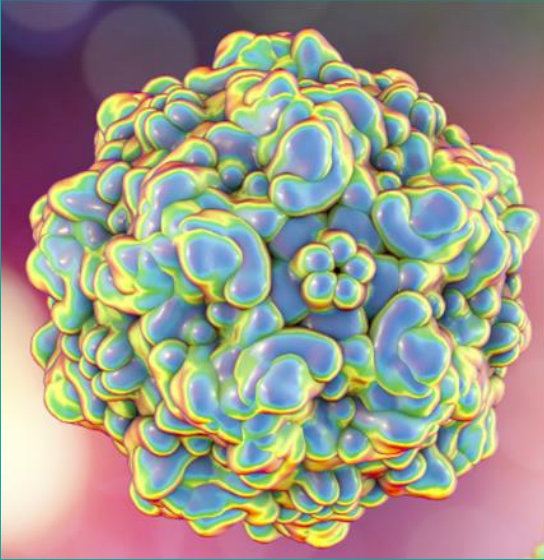


When Parvo Strikes:



*How to Recognize, Prevent, Manage and Recover
from Canine Parvovirus Outbreaks*

Pearland Parvo Recovery Center
Daran Bishop
Jeanette Savage
Candice Goode

Caring Hands Humane Society back open after parvovirus outbreak

Posted: Oct 08, 2019 9:52 PM CDT

Animal rescue groups in NWLA battle parvo outbreak

Jamie Ostroff Jun 6, 2019

Vet hospital warns of Parvo virus outbreak

April 27, 2019 Richmond County Daily Journal News, Top Stories

Spike in parvo virus cases across Las Vegas Valley

Alexandra de Leon

Posted Nov 6, 2019 | 0

AWLA Kennels Closed Due to Dog Disease Outbreak

ARLnow.com November 8, 2019 at 2:15pm

Parvo outbreak forces Humane Society of Houston County to temporarily close

At least six dogs have been infected with parvo, and two have already died.

Humane Society of Henderson Co. closed due to parvo outbreak

Parvovirus detected in local dogs; Mikey's Chance saying it's their worst season yet

Kaitlyn Karmout Aug 26, 2019

Deadly virus impacting thousands of dogs, Indianapolis animal shelters, clinics say

Posted: 6:36 PM, May 27, 2019 Updated: 5:36 PM, May 27, 2019

What is Parvo?

- Highly **contagious** viral disease
- Relatively new – first appeared in dogs in 1978
- First vaccine developed in 1981
- Extremely **resilient**
- Affects **gastrointestinal** and **immune systems**
- **No cure**
- Treatment is **supportive** (i.e., treat the symptoms)
- **Parvo ‘season’ = puppy season**



PEARLAND PARVO
RECOVERY CENTER

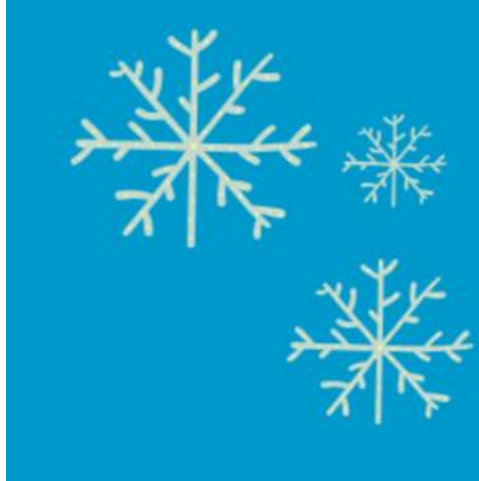
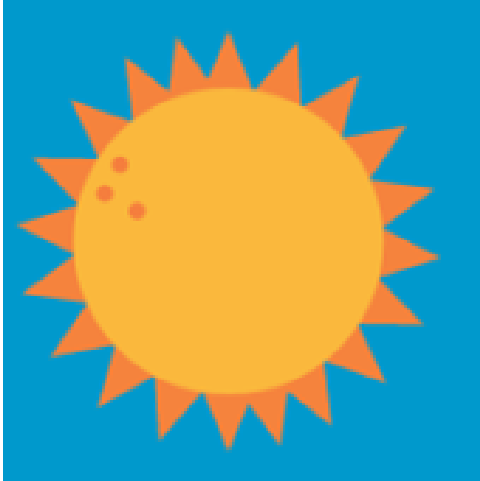
VOLUNTEER BASED NONPROFIT
LOW COST/ HIGH QUALITY TREATMENT
SERVING LOCAL SHELTERS & RESCUE GROUPS

How Parvo Spreads

Dog's can catch Parvo **whenever they come into direct contact with the virus, not just the infected dog**



Parvo is Highly Resistant



Resistant to:

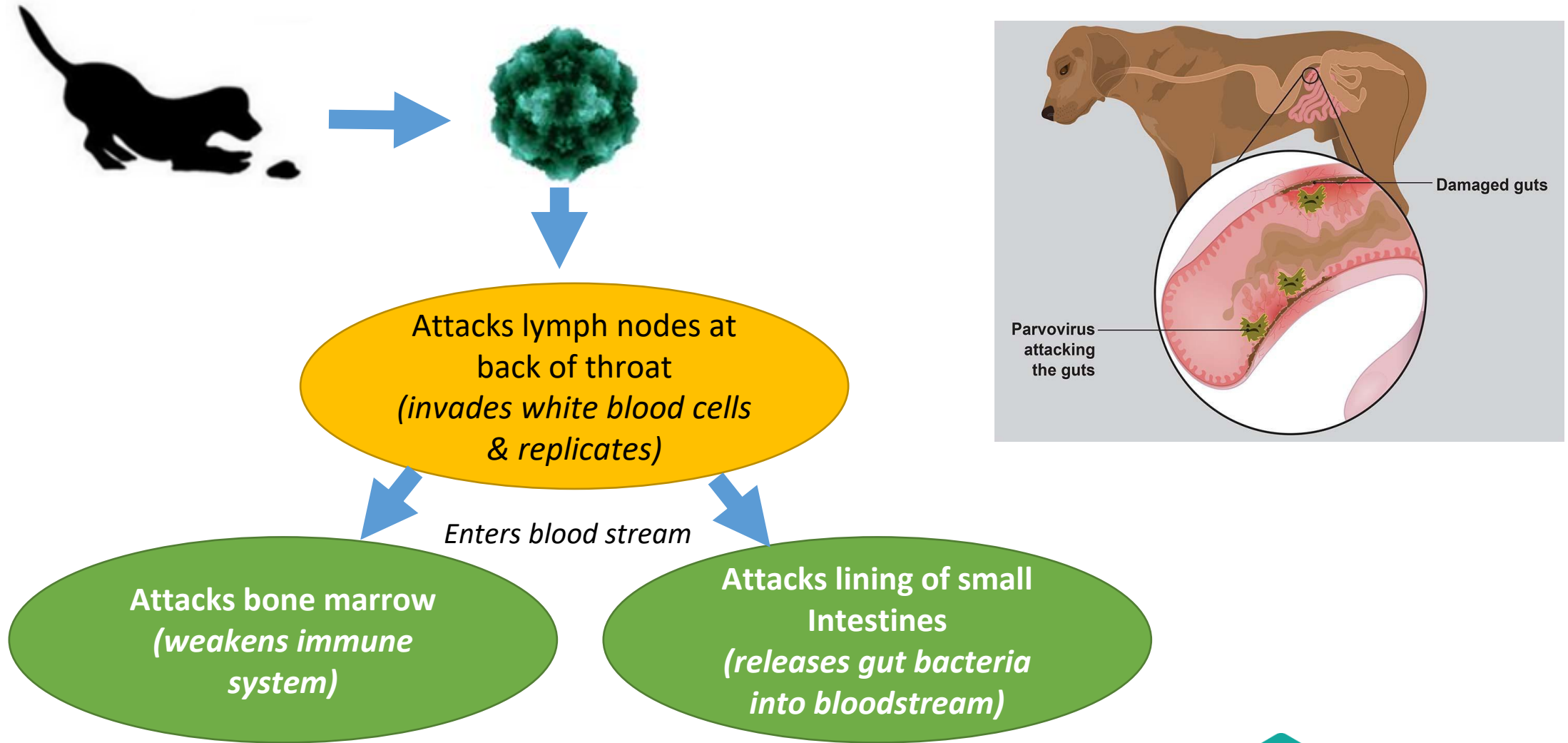
- Heat (under 212 degrees F)
- Sunlight
- Cold / Snow
- Humidity / Dryness
- Water
- Some Household Cleaners
 - ❌ Vinegar
 - ❌ Lysol
 - ❌ Spic and Span
 - ❌ Clorox Wipes / Lysol Wipes



PEARLAND PARVO
RECOVERY CENTER

VOLUNTEER BASED NONPROFIT
LOW COST/ HIGH QUALITY TREATMENT
SERVING LOCAL SHELTERS & RESCUE GROUPS

Stages of Parvo



PEARLAND PARVO
RECOVERY CENTER

VOLUNTEER BASED NONPROFIT
LOW COST/ HIGH QUALITY TREATMENT
SERVING LOCAL SHELTERS & RESCUE GROUPS

Symptoms of Parvo

Symptoms:

- Diarrhea, often bloody
- Vomiting
- Lack of appetite
- Lethargy
- Anemia
- Fever
- 'Parvo smell'

Causes of death:

- Dehydration
- Sepsis
- Shock
- In severe cases:
 - hypoglycemia (low blood sugar)
 - hypoproteinemia (low levels of protein in blood)



PEARLAND PARVO
RECOVERY CENTER

VOLUNTEER BASED NONPROFIT
LOW COST/ HIGH QUALITY TREATMENT
SERVING LOCAL SHELTERS & RESCUE GROUPS

Parvo Timeline



Incubation Typically 3-5 days after exposure
Range is 2-14 days

Death 4-72 hours

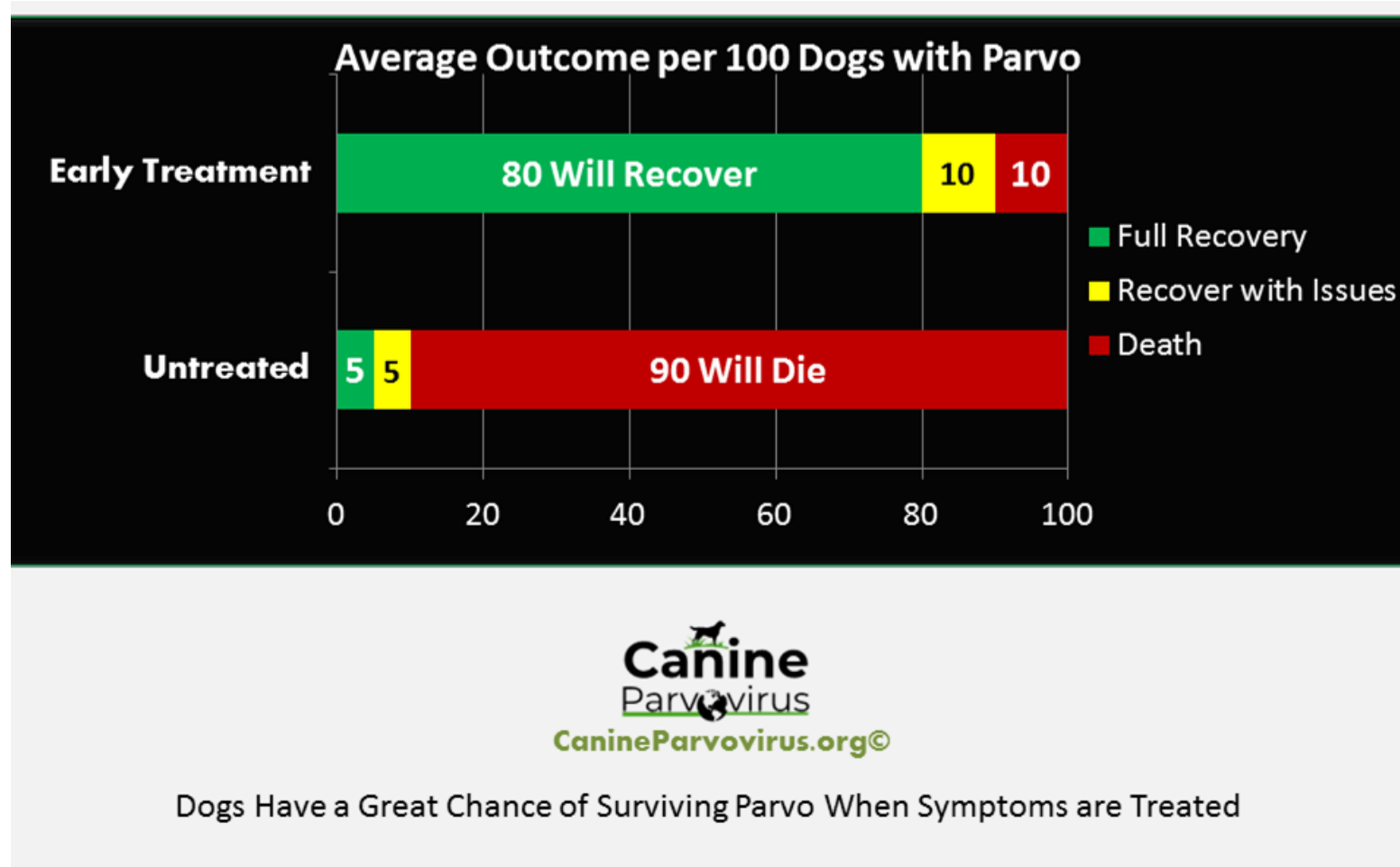
Contagious Within 3 days of exposure



PEARLAND PARVO
RECOVERY CENTER

VOLUNTEER BASED NONPROFIT
LOW COST/ HIGH QUALITY TREATMENT
SERVING LOCAL SHELTERS & RESCUE GROUPS

Parvo Survival Rate: Treated vs. Untreated



PEARLAND PARVO
RECOVERY CENTER

VOLUNTEER BASED NONPROFIT
LOW COST/ HIGH QUALITY TREATMENT
SERVING LOCAL SHELTERS & RESCUE GROUPS

Who is at risk for parvo?

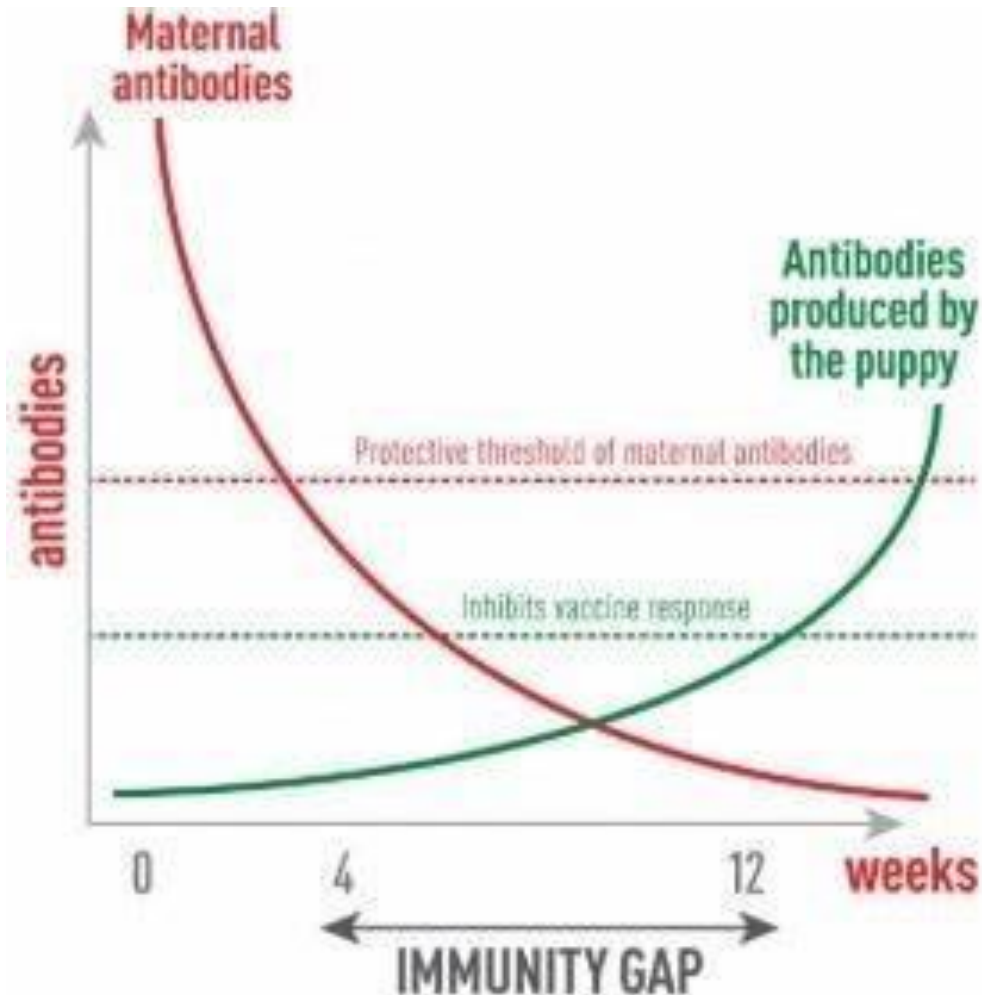
- Any unvaccinated dog of any age
- Any vaccinated dog with **impaired immunity**
- Puppies **6 weeks – 6 months** are most susceptible
- Increased risk for '**black and tan**' breeds
(Rottweilers, Doberman Pinschers, Pit Bulls, German Shepherd, etc.)



PEARLAND PARVO
RECOVERY CENTER

VOLUNTEER BASED NONPROFIT
LOW COST/ HIGH QUALITY TREATMENT
SERVING LOCAL SHELTERS & RESCUE GROUPS

Puppies – The Immunity Gap



Implications:

- **Vaccinating** Pregnant moms is not recommended. Check with a veterinarian before giving any vaccines
- **Boarding** can increase risk
- Greatest risk to puppies is between **4-12 weeks**
- Important to know **vaccine history** of any dog that presents with Parvo
- **When in doubt, assume no immunity and vaccinate. Before 6 weeks, check with veterinarian first.**



PEARLAND PARVO
RECOVERY CENTER

VOLUNTEER BASED NONPROFIT
LOW COST/ HIGH QUALITY TREATMENT
SERVING LOCAL SHELTERS & RESCUE GROUPS

Puppy Vaccine Schedule

- DHPP, DAPP, DA2PP, and DAPPC all cover parvo
- Start at **6-8 weeks**
- Vaccines given while nursing may be less effective due to maternal antibody interference.
- Re-vaccinate every **two weeks** for a total of **three vaccinations** or until puppy is 12-16 weeks
- 2-3 weeks are required for a puppy to mount a sufficient immune response to a vaccination



PEARLAND PARVO
RECOVERY CENTER

VOLUNTEER BASED NONPROFIT
LOW COST/ HIGH QUALITY TREATMENT
SERVING LOCAL SHELTERS & RESCUE GROUPS

Detecting Parvo

- **Fecal test**
 - *Detects parvo antigens in feces*
 - *IDEXX SNAP Parvo Test ~80% accurate*
- **False negatives?**
If test given during incubation period (prior to symptoms)
- **False positives?**
 - *Depends on who you ask...*
 - *If vaccines given recently*
- ***IF TEST IS POSITIVE, ASSUME IT'S PARVO!***



PEARLAND PARVO
RECOVERY CENTER

VOLUNTEER BASED NONPROFIT
LOW COST/ HIGH QUALITY TREATMENT
SERVING LOCAL SHELTERS & RESCUE GROUPS

Treating Parvo – Mild to Moderate Symptoms

When: no bloody diarrhea, not lethargic

| Use: | To: |
|---|--|
| Subcutaneous fluids | Prevent dehydration |
| Antibiotics | Prevent secondary infections |
| Anti-nausea medications | Stimulate appetite & prevent dehydration |
| Anti-diarrheal medications | Prevent dehydration |
| Injectable vitamins (B&C) | Boost immune system |
| Force feed <i>High calorie, easily digestible food</i> | Provide nutrition |



Remember – Treatment for parvo is supportive care



PEARLAND PARVO
RECOVERY CENTER

VOLUNTEER BASED NONPROFIT
LOW COST/ HIGH QUALITY TREATMENT
SERVING LOCAL SHELTERS & RESCUE GROUPS

Treating Parvo – Severe Symptoms

When: bloody diarrhea, lethargic, severe dehydration

| Use: | To: |
|---|---|
| Potassium & dextrose (via IV fluids) | Maintain blood sugar and electrolyte balance as well as prevent dehydration |
| Subcutaneous fluids | Prevent dehydration |
| Antibiotics | Prevent secondary infections |
| Anti-nausea medications | Stimulate appetite & prevent dehydration |
| Anti-diarrheal medications | Prevent dehydration |
| Injectable vitamins (B&C) | Boost immune system |
| Force feed (if possible) <i>High calorie, easily digestible food</i> | Provide nutrition |



PEARLAND PARVO
RECOVERY CENTER

VOLUNTEER BASED NONPROFIT
LOW COST/ HIGH QUALITY TREATMENT
SERVING LOCAL SHELTERS & RESCUE GROUPS

Parvo Recovery (Quarantine!!)

- Begins when **eating resumes** and **solid poop** begins to form
- Ends with **negative fecal test**
- Dogs continue to shed parvo for **at least 10-14 days** after recovery
- Due to **compromised immune system**, recovery dogs are susceptible to many secondary infections: skin conditions, giardia, coccidia, etc.
- Recovering dogs need:
 - **high quality nutrition**
 - **rest**
 - **careful observation**
- Continue (or begin) **vaccines** and **deworming**
- Last step of recovery, **thoroughly bathe the dog**



PEARLAND PARVO
RECOVERY CENTER

VOLUNTEER BASED NONPROFIT
LOW COST/ HIGH QUALITY TREATMENT
SERVING LOCAL SHELTERS & RESCUE GROUPS

In Home Parvo Recovery Requirements

See <https://canineparvovirus.org/canine-parvovirus-isolation/>

- Other dogs/pets MUST BE VACCINATED
- Isolated space (spare bedroom or bathroom or partitioned area)
- Warm, quiet, comfortable
- PPE (i.e., gloves, old shoes or shoe covers, old clothes)
- Parvicide cleaner to disinfect
- Designated spot in yard for elimination

*When infected dogs shed the parvovirus, they can shed **20-40 million viral particles** per ounce of feces.*



PEARLAND PARVO
RECOVERY CENTER

VOLUNTEER BASED NONPROFIT
LOW COST/ HIGH QUALITY TREATMENT
SERVING LOCAL SHELTERS & RESCUE GROUPS

Disinfecting after Parvo

- Products must specify that they “KILL” parvo
 - Chlorine Bleach - ½ cup per gallon (1:32 dilution)
 - Rescue (formerly Accel)
 - Sniper
 - F10
 - Trifectant
 - Virkon
 - Performacide
 - Steam Cleaning
- Disinfect **daily** during home treatment of parvo
- Disinfect everything **at least 3 times** after recovery
- Product comparison

<https://canineparvovirus.org/what-kills-parvo-besides-bleach/>



*Most household cleaners
won't kill parvo*



PEARLAND PARVO
RECOVERY CENTER

VOLUNTEER BASED NONPROFIT
LOW COST/ HIGH QUALITY TREATMENT
SERVING LOCAL SHELTERS & RESCUE GROUPS

How Long Does Parvo Remain in the Environment?

Indoor Environments: 30-90 days

Outdoor environments: 6 months to one year

If your home has been compromised:

- Limit canine visitors - **fully vaccinated dogs only**
- Limit canine fosters - **fully vaccinated dogs only**
- No young puppies
- **Alternative:** foster recovering parvo puppies



PEARLAND PARVO
RECOVERY CENTER

VOLUNTEER BASED NONPROFIT
LOW COST/ HIGH QUALITY TREATMENT
SERVING LOCAL SHELTERS & RESCUE GROUPS

Parvo Prevention – The Three “Ates”

Parvo can be PREVENTED

VACCINATE!

Parvo can be SPREAD

ISOLATE!

Parvo can SURVIVE

**DECONTAMINATE
!**

Parvo Resources

- For a list of additional resources on parvo:
<https://parvorecoverycenter.org/resources/>
- For a question about this presentation, email:
info@parvorecoverycenter.org
- To view this presentation online:
[https://parvorecoverycenter.org/wp-content/uploads/2020/04/When parvo strikes.pdf](https://parvorecoverycenter.org/wp-content/uploads/2020/04/When_parvo_strikes.pdf)



PEARLAND PARVO
RECOVERY CENTER

VOLUNTEER BASED NONPROFIT
LOW COST/ HIGH QUALITY TREATMENT
SERVING LOCAL SHELTERS & RESCUE GROUPS